

inSSIDer Office

Because everyone deserves awesome Wi-Fi.



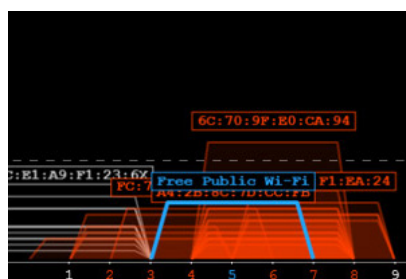
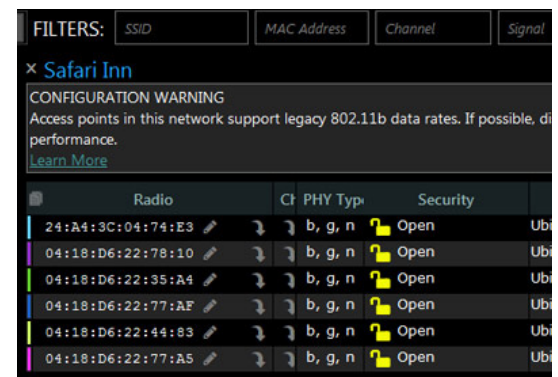
- Which rooms have good Wi-Fi coverage?
- Am I on the right channel?
- What other devices are transmitting in my environment?
- Is something interfering with my Wi-Fi signal?

If you can see it, you can fix it!

inSSIDer Office takes Wi-Fi network discovery to a whole new level. With one glance at the easy-to-read Networks Graph showing the 2.4 and 5 GHz Wi-Fi bands, you'll be able to find poor channel placement, diagnose low signal strength, and see invisible interference as you walk around your office or smart device-enabled home environment.

Not a Wi-Fi expert? Not a problem.

You might be the jack-of-all-trades IT person at a small company, or just the "techy" one in the family trying to stream the latest Game Of Thrones episode with surround sound to your wireless speakers. Either way, you don't have a lot of time to spend on learning everything there is to know about Wi-Fi. With inSSIDer Office, you won't need to, because it has built-in helpful recommendations and tips to show you what you're looking for and how to fix the problems that you do find. With just a few clicks, you can get channel recommendations as well as expert advice so you can create a reliable network in minutes.

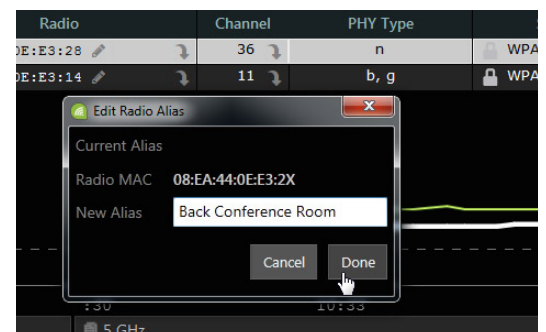


Take the guesswork out of channel selection

inSSIDer Office shows you where the best channel is once and for all. Stop sabotaging your setup by causing your AP's to overlap. You'll be able to visually see which networks are on which channels, so you can avoid competing for bandwidth with your neighbor's network. In addition to channel-by-channel stats, inSSIDer Office's channel recommendation algorithm is designed to handle multiple access points within the same network, making channel planning on a multi-AP network simple and accurate.

Manage Multiple Access Points with Ease

Need to manage more than one AP? Grouping by ESSID allows you to track signal strength as the roaming client device sees it. inSSIDer Office also alerts you if one of your radios in your larger ESSID network is configured differently than the rest, so you can keep a consistent experience for users as they roam smoothly between AP's. Who wants to memorize whether 08:11:96:7E:E3:84 is in the West Hallway or in the Break Room? The answer is that no one does, and now you don't have to. inSSIDer Office includes AP aliasing so you can give each access point a name that actually makes sense.



Quick-Fix Your Network with inSSIDer Office

Find RF Interference with Wi-Spy

Your Wi-Fi adapter can show you all the networks in the area, but what if there is a non-Wi-Fi device transmitting on the same channel as your access point or router AP? Your computer's Wi-Fi adapter can't see it, and you won't be able to either, unless you have a spectrum analyzer like Wi-Spy DBx or Wi-Spy Mini. With a Wi-Spy, you'll be able to see channel utilization by color, so you'll know immediately if non-Wi-Fi interference is destroying your signal.



Features Comparison

	inSSIDer Office (software only)	inSSIDer Office + Wi-Spy Mini	inSSIDer Office + Wi-Spy DBx
Group by Logical or Physical	✓	✓	✓
AP aliasing (nicknames)	✓	✓	✓
Channel Recommendations and Expert Analysis	✓	✓	✓
Network, Access Point, and Channel Drilldown	✓	✓	✓
802.11ac Support	✓	✓	✓
Channel Utilization Graph		✓	✓
2.4 GHz Spectrum Analysis		✓	✓
5 GHz Spectrum Analysis			✓
External antenna for greater Rx sensitivity			✓



Export data to Chanalyzer for deep analysis

Out of the box, inSSIDer Office is easy to use for network spot checks at a customer site. But what if you discover an issue, and want your company's Wi-Fi guru back at the office to check it out? Instead of sending the Wi-Fi expert to every single customer site along with the technicians, your field team can now capture on-site recordings with inSSIDer Office, then export them for later analysis in Chanalyzer. The expert back at the office can then fire up Chanalyzer, review recordings remotely, and solve the issue quickly without ever leaving their desk.

Windows Version

OPERATING SYSTEM: Microsoft® Windows 8, 7, Vista
 SCREEN RESOLUTION: 800x600 (1366x768 or better recommended)
 WI-FI RADIO: Internal or USB Wi-Fi Adapter (802.11n/ac recommended)
 .NET Framework: 4.5, RAM: 4 GB RAM

Mac Version

OPERATING SYSTEM: OS X 10.8-9 (Mountain Lion, Mavericks, and Yosemite)
 SCREEN RESOLUTION: 800x600 (1366x768 or better recommended)
 WI-FI RADIO: Airport Card (USB Wi-Fi not supported)
 RAM: 4 GB RAM

