

Data Access Solutions

— brochure —

ACCESS DATA WITH EASE AND SPEED

Quick to deploy and economical to implement, Data Access Solutions provide devices with the comprehensive visibility needed for optimal performance management.

Messkom Vertriebs GmbH,
Awarenring 38,
85419 Mauern,
Deutschland
Tel: 08764-948430,
Email: info@messkom.de,
URL: www.messkom.de

Matrix Network Monitoring Switch

The Matrix™ Network Monitoring Switch enhances the power of your monitoring appliances with its simple configurability and powerful features. Quickly leverage all of your legacy devices to get the right data to the right tool fast.

Features and Benefits

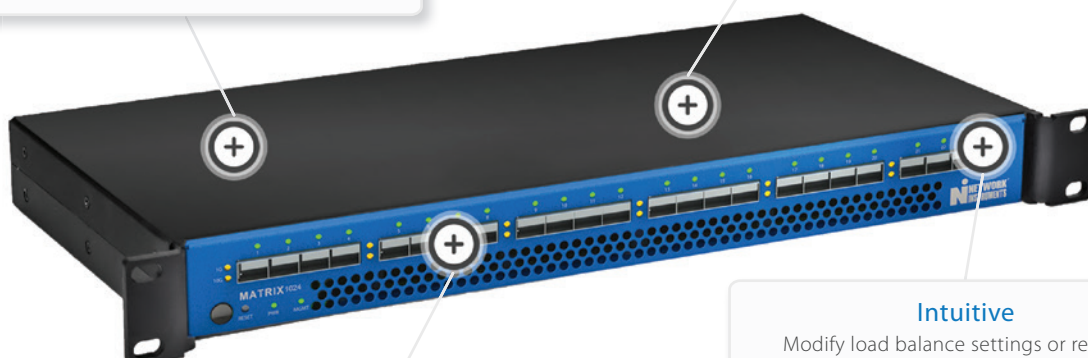
- Scalable to 24 ports per enclosure or daisy chain to support larger deployments
- Industry's first rule-based interface makes packet manipulation and filtering a snap
- Drag-and-drop HTML5 GUI for intuitive configuration, visualization, and management
- Intelligent filtering directs and passes only the most critical traffic, easing transition to 10 Gb
- Traffic pre-processing extends the life of legacy monitoring equipment, increases tool efficiency
- Cost-effective design with pay-as-you-grow options

Smart

Filtering, de-duplication, and packet trimming are executed fast. Traffic pre-processing can extend the life of legacy monitoring equipment or increase tool efficiency.

Specialized

Hardware is exclusively designed to keep up at line rate on fully saturated 10 Gb links.



Scalable

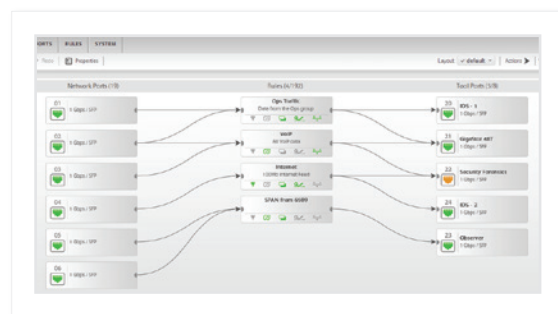
Easily configure to 24 ports and beyond.

Intuitive

Modify load balance settings or replicate traffic with two mouse clicks. Intuitive UI and centralized rules let you change traffic patterns in seconds.

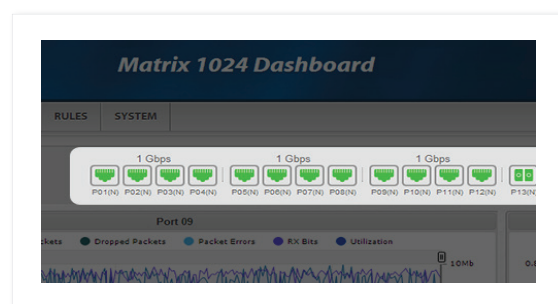
Setup in Just 10 Minutes

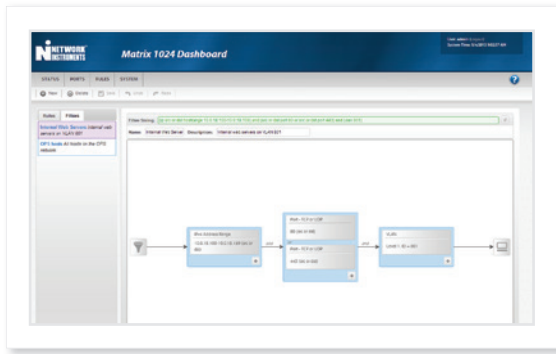
The Matrix has been designed from the ground up for plug-and-play simplicity that translates into a total typical setup time of 10 minutes. This is all done through a new rules-based paradigm that integrates traffic flow configuration and management into a single, centralized approach rather than scattered across ingress and egress ports. Use BPF syntax or the intuitive, drag-and-drop HTML5 interface to quickly understand and utilize the Matrix's robust feature set.



Scalable and Cost-Effective

Scalable up to 24 ports per chassis, Matrix units can be daisy chained to support larger deployments. Add-on port license upgrades are sensibly priced, and with no port assignment limitations any port can serve as a network or tool. Pricing is all inclusive and there are no hidden fees.





More Power and More Control

Every good network monitoring switch includes aggregation, load balancing, speed conversion, and traffic replication. However, Matrix was developed for deep packet manipulation and comes with additional features like user-configured de-duplication, packet trimming, IEEE-1588 (PTP), GPS, or NTP time stamp options, as well as the most powerful filtering capabilities on the market today.

Third Party Integration

A RESTful API enables Matrix to share information with third party apps or allows it to be managed and configured remotely by higher level management tools.

Network Taps

A Network Access Point for Any Device

nTAPs™ are passive, full-duplex devices, offering complete visibility to monitoring devices regardless of traffic level. They work with the leading management tools for quick and easy deployment. nTAPs are transparent for monitoring critical links, and provide continuous network data flow even if power fails. Network Instruments nTAPs are scalable, modularized, and economical.

High-Density Optical nTAP

Access up to 24 full-duplex links with the easy-to-deploy High-Density Optical nTAP (HDOT).

Durable

Strong, lasting aluminum chassis designed exclusively by Network Instruments. No off-the-shelf components.

Compact

Tap up to 24 fiber links inside a 1U rack space. The space-saving design optimizes data center usage.

Modular

Built to scale. Start with only the modules that you need. Add or change modules as you see fit.

Flexible

Mix and match the speeds, fiber modes, and split ratios needed for your environment.



nTAP Options

Optical nTAPs

For use on full-duplex optical links. Attach to an optical monitoring device equipped with a dual-receive capture card. Available in 1, 10, 40 and 100 Gb speeds.

Optical 40 Gb



One Channel



Two Channel



Three Channel



Copper nTAPs

Gain full visibility into links with sturdy, easy-to-install copper nTAPs. Feed analyzers, security devices and more without fear of lost data.

10/100 Copper



10/100/1000 Copper



Aggregator and Conversion nTAPs

When analyzers and other monitoring devices communicate over different topologies than the network, Aggregator and Conversion nTAPs can bridge the gap.

10/100/1000 Aggregator



Optical to Copper Aggregator Conv.



Optical to Copper Conv.



10/100/1000 Aggregator Conv.



10/100/1000 Copper to Optical Conv.



JDSU Performance Management

About Network Instruments

Established in 1994, Network Instruments (JDSU) is an industry leader in application and network management. It provides products that optimize performance and speed problem resolution, helping ensure delivery of critical applications for businesses worldwide. For more information visit www.networkinstruments.com.

Corporate Headquarters

10701 Red Circle Dr. • Minnetonka, MN 55343 • USA
Toll Free: 800.526.7919 • Voice: 952.358.3800 • Fax: 952.358.3801